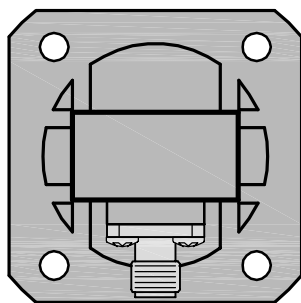
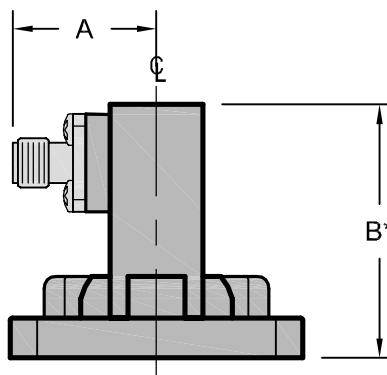
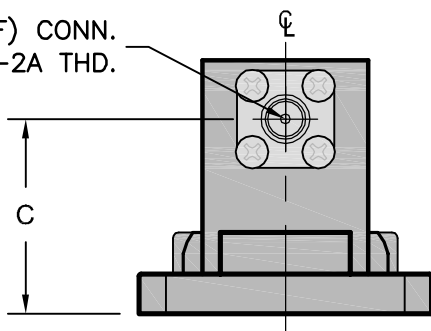


REV A	AUTH RL	DATE 7/17/02	INITIAL RELEASE
B-K	-	-	REVISIONS B THRU K DOCUMENTED ON ECN 3-30-06-01
L	RL	3/01/06	FORMAT UPDATED, SEE ECN 3-30-06-01 FOR REVISIONS
M	RL	04/05/06	NOTES FOR K-TYPE CONN. ADDED



FLANGE AS PER REQUESTED (COVER SHOWN)

**SMA (F) CONN.
1/4-36 UNS-2A THD.



DIMENSIONS (INCHES)			
WG TYPE	A	B	C
WR28	0.60	0.95	0.76
WR34	0.50	1.00	0.72
WR42	0.65	1.00	0.75
WR51	0.69	1.20	0.85
WR62	0.73	1.00	0.65
WR75	0.74	1.00	0.63
WR90	0.75	1.00	0.63
WR102	0.77	1.50	1.12
WR112	0.80	1.14	0.67
WR137	0.75	1.70	1.23
WR159	0.84	1.83	1.21
WR187	0.88	2.60	1.96
WR229	1.01	2.28	1.44
WR284	1.13	2.95	1.90
WR340	1.31	3.50	2.19
WR430	1.53	4.00	2.34
WR650	2.08	5.00	2.40

*DIMENSION GIVEN ARE FOR MODELS WITH STANDARD FLANGE CONFIGURATION, ACTUAL LENGTH MAY VARY FOR MODELS WITH SPECIAL FLANGE CONFIG.

**TYPE-K CONNECTORS SUPPLIED WITH WR28 & WR34 MODELS.

THIRD ANGLE PROJECTION:		APPROVALS	DATE		ADVANCED TECHNICAL MATERIALS, INC.		THE INFORMATION IN THIS DRAWING IS PROPRIETARY AND SHALL NOT BE USED OR DISCLOSED WITHOUT THE PRIOR WRITTEN CONSENT OF ATM, INC. DO NOT SCALE DWG.		
UNLESS OTHERWISE NOTED, DIMENSIONS ARE IN INCHES, TOLERANCES ARE: FRACTIONS: ±1/64 ANGLES: ±1/2°		DRAWN RL	03/31/06		TEL: (631) 289-0363 FAX: (631) 289-0358 www.atmmicrowave.com				
BASIC DIMENSION		DECIMALS 2 PLACE	3 PLACE	APRVD.		OUTLINE, W/G-COAX ADAPTER, SMA			
UNDER 6"	±.02	±.005	MATERIAL PER ORDER	SIZE A	CAGE CODE OR8N4			ATM DWG # 5037W	REVISION M
6" - 12"	±.03	±.010	TREATMENT -	SCALE NONE	MODEL # -			SHEET 1/1	
OVER 12"	±.06	±.015	FINISH ATM GRAY						