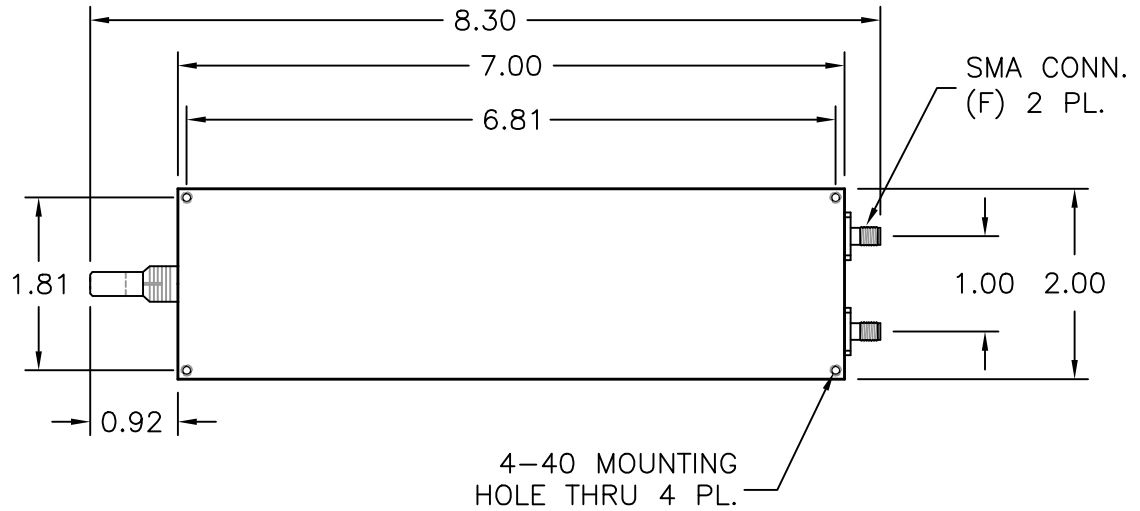
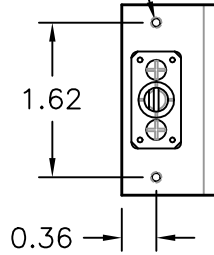
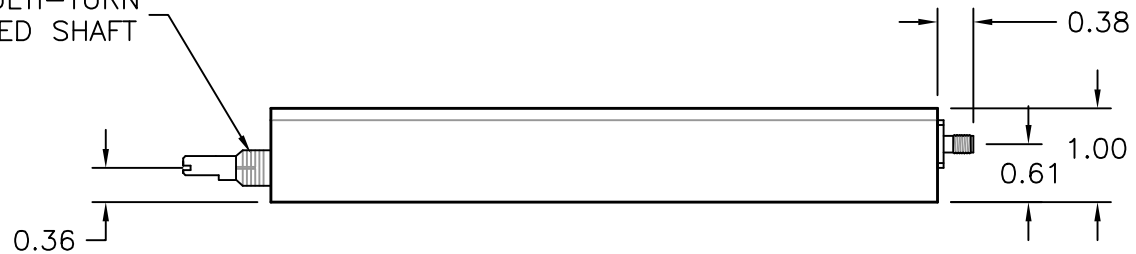


REV.	DATE	INITIAL
A	MM/DD/YY	RELEASE

4-40 X .25 DP.
MOUNTING HOLE
2 PL.




ø.25 MULTI-TURN
SLOTTED SHAFT



NOTES:

1. ALL STANDARD MODELS COME WITH LOCK NUT & KNOB
2. ALL MODELS HAVE AN RF POWER RATING OF 100W AVERAGE & 3 KW PEAK

MATERIAL -	TREATMENT -	DRAWN R. LYNCH	DATE 7/13/01
FINISH ATM STD. GRAY	MOD NO. P160XX	CHECKED	DATE
7.00" PHASESHIFTER OUTLINE - STD. SHAFT		APPROVED	DATE
		ADVANCED TECHNICAL MATERIALS, INC. 49 RIDER AVE., PATCHOGUE N.Y. 11772 TEL: (631) 289-0386 FAX: (631) 289-0358 http://www.atmmicrowave.com	
UNLESS OTHERWISE NOTED DIMENSIONS ARE IN INCHES TOLERANCES ARE:		FRACTIONS ±1/64 DECIMALS ±.01 ANGLES ±1/2°	SHEET. 1/1
 PROPRIETARY NOTICE: THE INFORMATION IN THIS DRAWING IS PROPRIETARY AND SHALL NOT BE USED OR DISCLOSED WITHOUT THE PRIOR WRITTEN CONSENT OF ATM, INC.		SCALE 1 : 2	DWG. NO. 4436W REV. A