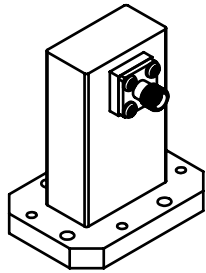


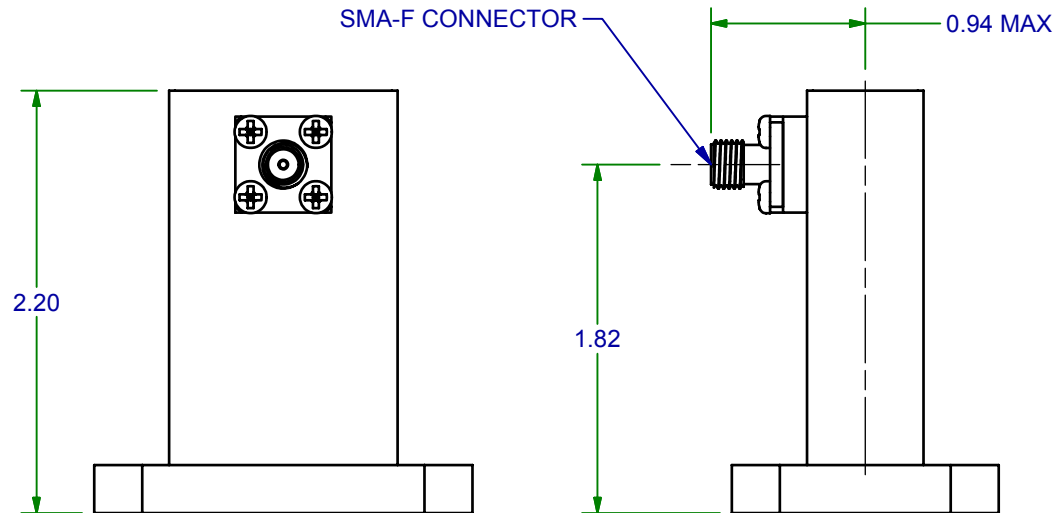
2

1

REVISION HISTORY				DESCRIPTION
REV	AUTH	DATE		
A	DM	03/24/11	INITIAL RELEASE	



ISO VIEW
SCALE 1 / 2



SPECIFICATIONS

MODEL#: 475-251-XX

WG SIZE: WRD475

FLANGE TYPE: PER ORDER

CONN TYPE: SMA FEMALE

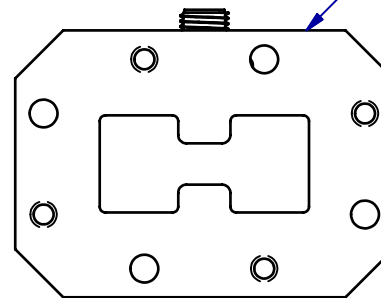
FREQUENCY: 4.75-11.0 GHz

VSWR: 1.25 max

MATERIAL, BODY: ALUMINUM

MATERIAL, CONN: STAINLESS STEEL

FINISH: UNIQUE CORROSION RESISTANT
316 STAINLESS STEEL EPOXY




WRD475 FLANGE
(PER CUSTOMER ORDER)
SEE TABLE

WRD475 FLANGE TYPES		
Designation	Face Type	Hole Type
C1	COVER	ALT. TAPPED / THRU
C2	COVER	ALL TAPPED
C3	COVER	ALL THRU
G1	GROOVE	ALT. TAPPED / THRU
G2	GROOVE	ALL TAPPED
G3	GROOVE	ALL THRU

NOTES:

1. SHOWN WITH WRD475-C1 FLANGE.

THIRD ANGLE PROJECTION:		APPROVALS	DATE	 ADVANCED TECHNICAL MATERIALS, INC. TEL: (631) 289-0363 FAX: (631) 289-0358 www.atmmicrowave.com		<small>THE INFORMATION IN THIS DRAWING IS PROPRIETARY AND SHALL NOT BE USED OR DISCLOSED WITHOUT THE PRIOR WRITTEN CONSENT OF ATM, INC. DO NOT SCALE DWG.</small>	
UNLESS OTHERWISE NOTED, DIMENSIONS ARE IN INCHES, TOLERANCES ARE: FRACTIONS: ±1/64 ANGLES: ±1/2°		DRAWN DM		<h2>OUTLINE</h2> <h3>WRD475 WG-COAX ADAPTER - SMA</h3>			
		CHKD.					
		APRVD.		SIZE A	CAGE CODE 0R8N4	ATM DWG # 12959	REVISION A
DECIMALS		MATERIAL 6061-T6 ALUMINUM		MODEL # 475-251-XX		SHEET 1/1	
2 PLACE	3 PLACE	TREATMENT CHEM FILM					
±.01	±.005	FINISH ATM STD GRAY					

2

1